

BUSINESS INTELLIGENCE FOR LOCAL FLEETS

# Garmin User Guide for VehiclePath



VehiclePath.com



Spireon Inc. is proud to announce the release of the new and improved VehiclePath 2.0 software. This document outlines the navigational changes made to the VehiclePath user interface as well as the new features that make VehiclePath 2.0 the most modern, streamlined and full-featured user interface we've offered to date.

## Introduction

Thank you for choosing VehiclePath for your fleet tracking needs. Spireon continues to make every effort to keep VehiclePath users at the forefront of asset tracking technology.

In addition to several other new features, VehiclePath users can now integrate compatible Garmin navigation devices with the VP2500 to take advantage of the two-way communication features found in the Messaging tab of the new VehiclePath 2.0 user interface.

Contact the VehiclePath technical support team if you have any questions or if you should encounter any difficulty in integrating your Garmin device with your VP2500.

Toll Free Support  
877.299.6544  
[support@vehiclepath.com](mailto:support@vehiclepath.com)



## Supported Garmin Devices

nüvi series 12xx, 13xx, 14xx, 24xx, 2xx5, 2xx7 and dēzl 760LMT supporting versions 2.7 Fleet Management Interface (Garmin FMI)

nüvi series 2xx7, 14xx and dēzl series 560, supporting versions 2.8 Fleet Management Interface (Garmin FMI)

Other supported Garmin devices include: nüvi series 22xx, 23xx, supporting versions 2.6 Fleet Management Interface (Garmin FMI) and nüvi 465T supporting versions 2.1 Fleet Management Interface (Garmin FMI).

**Note:** All Garmin devices with the 2.1 or greater version of the Fleet Management Interface are supported.

## Installation

Integrating a Garmin navigation device with the VP2500 is a simple, straightforward, one-wire installation. Follow these steps to ensure a proper connection.

- 1) Locate the optional Garmin integration cable and plug the mini USB end into the Garmin navigation unit
- 2) Plug the other end into the AUX 1 port on the VP2500 itself. No wires need to be cut or spliced.
- 3) Secure the wire in a safe location which will protect it from accidental unplugging. Use wire ties if necessary.
- 4) Validate installation by testing functionality of the features in the **Messaging** tab in VehiclePath 2.0.

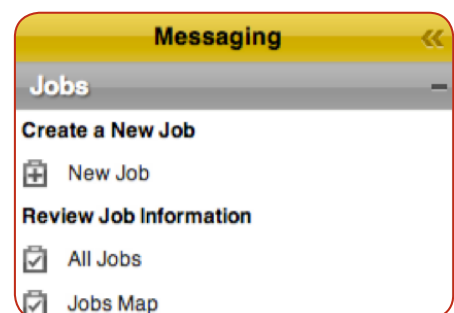
## User interface

The **Messaging** accordion tab contains the following menu groups and sub-menus:

**Jobs** – **Create a New Job** and **Review Job Information**

**Send a Message** – A list of Garmin equipped vehicles

**Message Logs** – **View Message Logs**

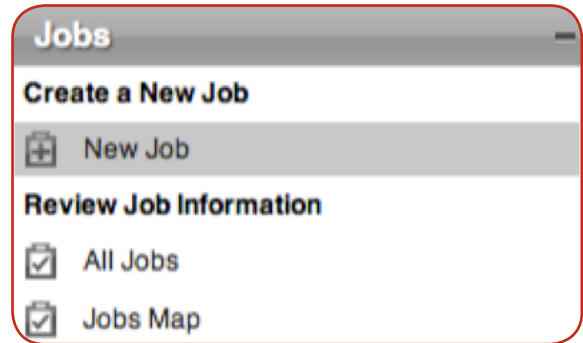


The **Messaging** tab also contains a handy dashboard, which makes it easier for users to view their most recent jobs, job statuses and messages; all on one screen.

## Jobs

### Creating a New Job:

- 1) Open the **Jobs** menu group in the **Messaging** accordion menu
- 2) Click **New Job** under **Create a New Job**
- 3) Enter the required information into the **New Job** form
- 4) Click **Save**
- 5) Click **OK** to close the dialogue box



### Review Job Information:

- 1) Open the **Jobs** menu group in the **Messaging** accordion menu
- 2) Click **All Jobs**
- 3) A detailed list of jobs will be displayed in the **Jobs** window
- 4) The **Jobs** grid can be filtered using the filter dropdown menus

### Edit a Job:

- 1) Click the **Edit Job** icon in the **Jobs** grid
- 2) Edit the Jobs' parameters
- 3) Click **Save**

	Vehicle	Job Name ▾	Job Status
	Vehicle: VP600	Test Job	Pending
	Vehicle: VP600	stop at PA office	Pending
	Vehicle: VP600	Smith Job #4	Pending

### Delete a Job:

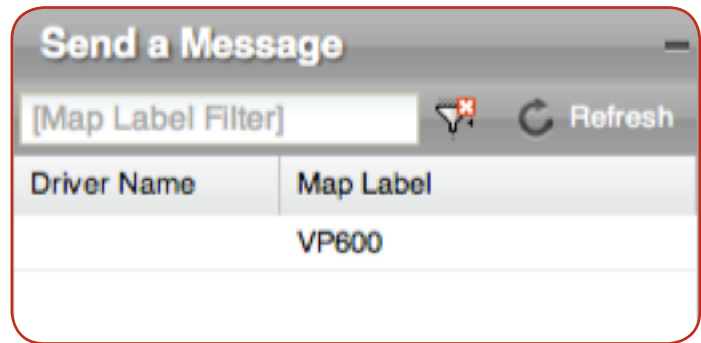
- 1) Click the **Delete Job** icon in the **Jobs** grid
- 2) Confirm the deletion
- 3) Click **OK** to close the dialogue box

	Vehicle	Job Name ▾	Job Status
	Vehicle: VP600	Test Job	Pending
	Vehicle: VP600	stop at PA office	Pending
	Vehicle: VP600	Smith Job #4	Pending

## Messages

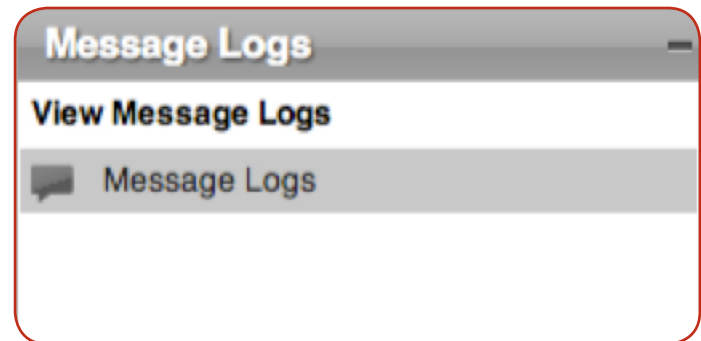
### Send a Message

- 1) Open the **Send a Message** menu group in the **Messaging** accordion menu
- 2) Double-click the device to be messaged. A chat window will be displayed
- 3) Enter the message text into the chat bar
- 4) Click **Send**
- 5) The new message should appear in the chat window

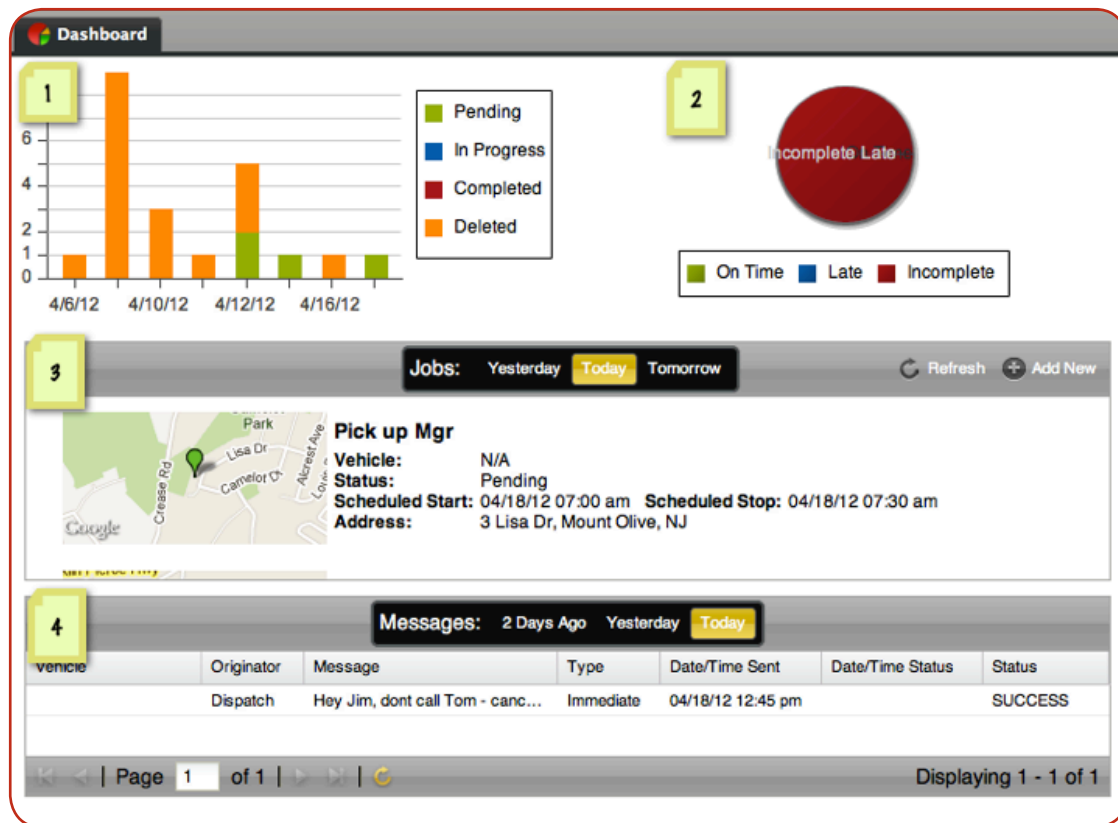


### Review Message Logs:

- 1) Open the **Message Logs** menu group in the **Messaging** accordion menu. Double click **Message Logs** to open up the **Message Logs** grid
- 2) View message log
- 3) Use the filter dropdown menus to filter the Message Log grid



## Dashboard



- 1) A bar graph displaying all job statuses **Pending, In Progress, Completed, Deleted** by date
- 2) A pie graph comparing the ratio of **On Time, Late** and **Incomplete** jobs associated with the account
- 3) A detailed list of recent jobs and their information **Name, Vehicle, Status, Scheduled Start/Stop** and **Address**
- 4) A message log displaying the most recent two-way communications with drivers